

STANDARD ARRIVAL  
CHART - INSTRUMENT  
(STAR) - ICAO

TRANSITION ALTITUDE  
10000 FT

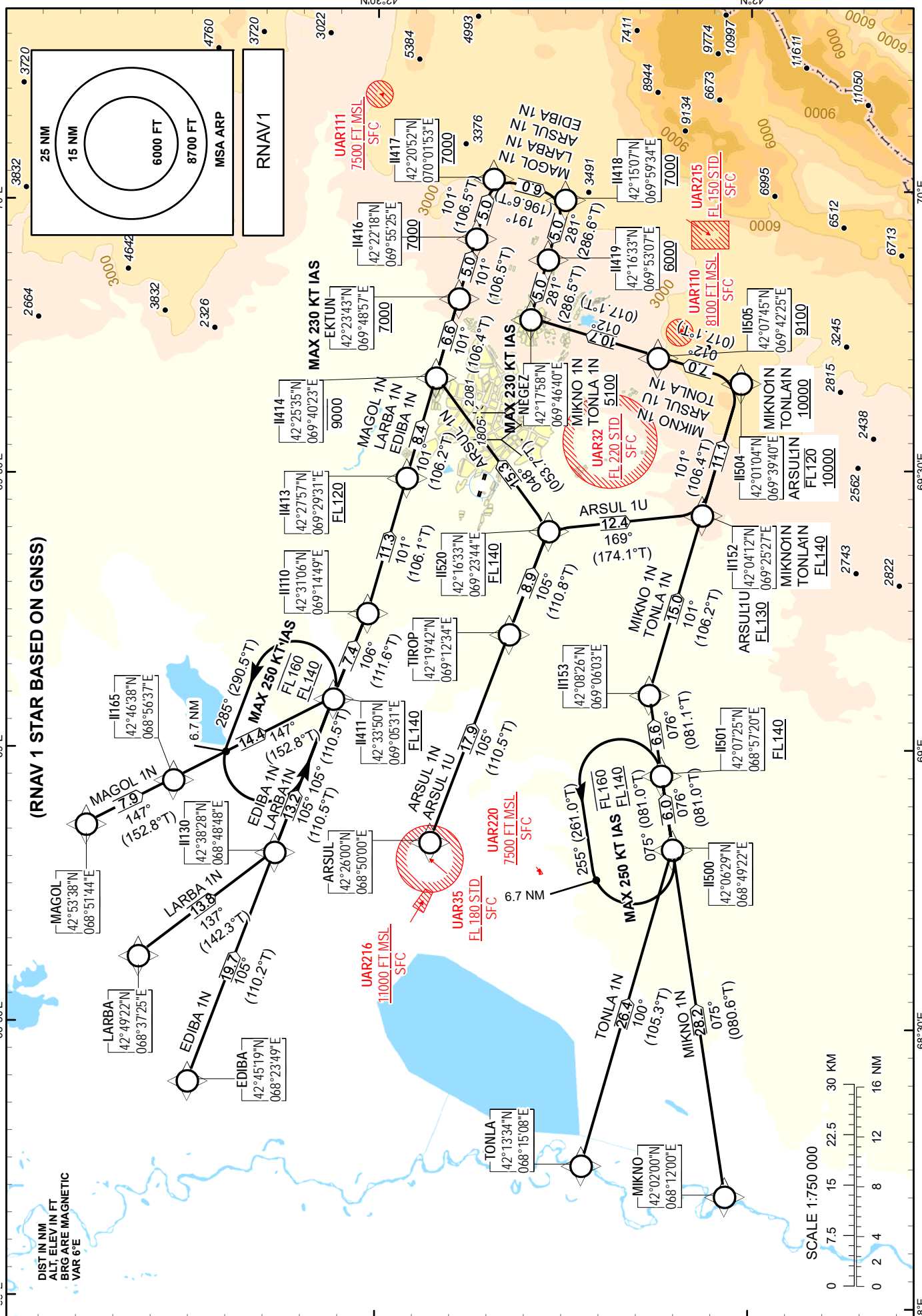
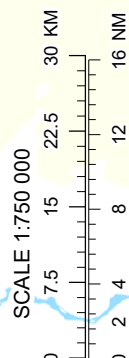
SHYMKENT TOWER 125.9  
SHYMKENT ATIS (EN) 119.2  
SHYMKENT ATIS (RU) 126.6

ARSUL 1N/1U, EDIBA 1N,  
LARBA 1N, MAGOL 1N,  
MIKNO 1N, TONLA 1N.

SHYMKENT  
RWY 28

CHANGE: New chart.

DIST IN NM  
ALT, ELEV IN FT  
Brg ARE MAGNETIC  
VAR 6°E



TABULAR DESCRIPTION

ARSUL 1N											
Serial Number	Path Descriptor	Waypoint Identifier	Fly - over	Course °M(°T)	Magnetic Variation(°)	Distance NM	Turn Direction	Altitude FT	Speed KT	VPA (°)	Navigation Specification
10	IF	ARSUL	-	-	+5.5	-	-	-	-	-	RNAV 1
20	TF	TIROP	-	105(110.5)	+5.5	17.9	L	-	-	-	RNAV 1
30	TF	II520	-	105(110.8)	+5.5	8.9	-	+FL140	-	-	RNAV 1
40	TF	II414	-	048(053.7)	+5.5	15.3	L	-9000	-	-2.5	RNAV 1
50	TF	EKTUN	-	101(106.4)	+5.5	6.6	R	+7000	-230	-2.8	RNAV 1
60	TF	II416	-	101(106.5)	+5.5	5.0	-	+7000	-	-	RNAV 1
70	TF	II417	-	101(106.5)	+5.5	5.0	-	+7000	-	-	RNAV 1
80	TF	II418	-	191(196.6)	+5.5	6.0	R	+7000	-	-	RNAV 1
90	TF	II419	-	281(286.6)	+5.5	5.0	R	+6000	-	-	RNAV 1
100	TF	NEGEZ	-	281(286.5)	+5.5	5.0	-	+5100	-	-3.6	RNAV 1

ARSUL 1U											
Serial Number	Path Descriptor	Waypoint Identifier	Fly - over	Course °M(°T)	Magnetic Variation(°)	Distance NM	Turn Direction	Altitude FT	Speed KT	VPA (°)	Navigation Specification
10	IF	ARSUL	-	-	+5.5	-	-	-	-	-	RNAV 1
20	TF	TIROP	-	105(110.5)	+5.5	17.9	L	-	-	-	RNAV 1
30	TF	II520	-	105(110.8)	+5.5	8.9	-	+FL140	-	-	RNAV 1
40	TF	II152	-	169(174.1)	+5.5	12.4	R	+FL130	-	-	RNAV 1
50	TF	II504	-	101(106.4)	+5.5	11.1	L	+10000 -FL120	-250	-2.6	RNAV 1
60	TF	II505	-	012(017.1)	+5.5	7.0	L	+9100	-	-1.2	RNAV 1
70	TF	NEGEZ	-	012(017.1)	+5.5	10.7	-	+5100	-230	-3.5	RNAV 1

EDIBA 1N											
Serial Number	Path Descriptor	Waypoint Identifier	Fly - over	Course °M(°T)	Magnetic Variation(°)	Distance NM	Turn Direction	Altitude FT	Speed KT	VPA (°)	Navigation Specification
10	IF	EDIBA	-	-	+5.5	-	-	-	-	-	RNAV 1
20	TF	II130	-	105(110.2)	+5.5	19.7	L	-	-	-	RNAV 1
30	TF	II411	-	105(110.5)	+5.5	13.2	-	+FL140	-	-	RNAV 1
40	TF	II110	-	106(111.6)	+5.5	7.4	R	-	-	-1.3	RNAV 1
50	TF	II413	-	101(106.1)	+5.5	11.3	L	+FL120	-	-0.8	RNAV 1
60	TF	II414	-	101(106.2)	+5.5	8.4	-	-9000	-	-3.4	RNAV 1
70	TF	EKTUN	-	101(106.4)	+5.5	6.6	-	+7000	-230	-2.8	RNAV 1
80	TF	II416	-	101(106.5)	+5.5	5.0	-	+7000	-	-	RNAV 1
90	TF	II417	-	101(106.5)	+5.5	5.0	-	+7000	-	-	RNAV 1
100	TF	II418	-	191(196.6)	+5.5	6.0	R	+7000	-	-	RNAV 1
110	TF	II419	-	281(286.6)	+5.5	5.0	R	+6000	-	-1.9	RNAV 1
120	TF	NEGEZ	-	281(286.5)	+5.5	5.0	-	+5100	-	-1.7	RNAV 1

LARBA 1N											
Serial Number	Path Descriptor	Waypoint Identifier	Fly - over	Course °M(°T)	Magnetic Variation(°)	Distance NM	Turn Direction	Altitude FT	Speed KT	VPA (°)	Navigation Specification
10	IF	LARBA	-	-	+5.5	-	-	-	-	-	RNAV 1
20	TF	II130	-	137(142.3)	+5.5	13.8	L	-	-	-	RNAV 1
30	TF	II411	-	105(110.5)	+5.5	13.2	L	+FL140	-	-	RNAV 1
40	TF	II110	-	106(111.6)	+5.5	7.4	R	-	-	-1.3	RNAV 1
50	TF	II413	-	101(106.1)	+5.5	11.3	L	+FL120	-	-0.8	RNAV 1
60	TF	II414	-	101(106.2)	+5.5	8.4	-	-9000	-	-3.4	RNAV 1
70	TF	EKTUN	-	101(106.4)	+5.5	6.6	-	+7000	-230	-2.8	RNAV 1
80	TF	II416	-	101(106.5)	+5.5	5.0	-	+7000	-	-	RNAV 1
90	TF	II417	-	101(106.5)	+5.5	5.0	-	+7000	-	-	RNAV 1
100	TF	II418	-	191(196.6)	+5.5	6.0	R	+7000	-	-	RNAV 1
110	TF	II419	-	281(286.6)	+5.5	5.0	R	+6000	-	-	RNAV 1
120	TF	NEGEZ	-	281(286.5)	+5.5	5.0	-	+5100	-230	-1.7	RNAV 1

MAGOL 1N											
Serial Number	Path Descriptor	Waypoint Identifier	Fly - over	Course °M(°T)	Magnetic Variation(°)	Distance NM	Turn Direction	Altitude FT	Speed KT	VPA (°)	Navigation Specification
10	IF	MAGOL	-	-	+5.5	-	-	-	-	-	RNAV 1
20	TF	II165	-	147(152.8)	+5.5	7.9	R	-	-	-	RNAV 1
30	TF	II411	-	147(152.8)	+5.5	14.4	-	+FL140	-	-	RNAV 1
40	TF	II110	-	106(111.6)	+5.5	7.4	L	-	-	-1.3	RNAV 1
50	TF	II413	-	101(106.1)	+5.5	11.3	L	+FL120	-	-0.8	RNAV 1
60	TF	II414	-	101(106.2)	+5.5	8.4	-	-9000	-	-3.4	RNAV 1
70	TF	EKTUN	-	101(106.4)	+5.5	6.6	-	+7000	-230	-2.8	RNAV 1
80	TF	II416	-	101(106.5)	+5.5	5.0	-	+7000	-	-	RNAV 1
90	TF	II417	-	101(106.5)	+5.5	5.0	-	+7000	-	-	RNAV 1
100	TF	II418	-	191(196.6)	+5.5	6.0	R	+7000	-	-	RNAV 1
110	TF	II419	-	281(286.6)	+5.5	5.0	R	+6000	-	-	RNAV 1
120	TF	NEGEZ	-	281(286.5)	+5.5	5.0	-	+5100	-230	-1.7	RNAV 1

MIKNO 1N											
Serial Number	Path Descriptor	Waypoint Identifier	Fly - over	Course °M(°T)	Magnetic Variation(°)	Distance NM	Turn Direction	Altitude FT	Speed KT	VPA (°)	Navigation Specification
10	IF	MIKNO	-	-	+5.5	-	-	-	-	-	RNAV 1
20	TF	II500	-	075(080.6)	+5.5	28.2	R	-	-	-	RNAV 1
30	TF	II501	-	076(081.0)	+5.5	6.0	-	+FL140	-	-	RNAV 1
40	TF	II153	-	076(081.1)	+5.5	6.6	-	-	-	-	RNAV 1
50	TF	II152	-	101(106.2)	+5.5	15.0	R	+FL140	-	-	RNAV 1
60	TF	II504	-	101(106.4)	+5.5	11.1	-	+10000	-250	-2.6	RNAV 1
70	TF	II505	-	012(017.1)	+5.5	7.0	L	+9100	-	-1.2	RNAV 1
80	TF	NEGEZ	-	012(017.1)	+5.5	10.7	-	+5100	-230	-3.5	RNAV 1

TONLA 1N											
Serial Number	Path Descriptor	Waypoint Identifier	Fly - over	Course °M(°T)	Magnetic Variation(°)	Distance NM	Turn Direction	Altitude FT	Speed KT	VPA (°)	Navigation Specification
10	IF	TONLA	-	-	+5.5	-	-	-	-	-	RNAV 1
20	TF	II500	-	100(105.3)	+5.5	26.4	R	-	-	-	RNAV 1
30	TF	II501	-	076(081.0)	+5.5	6.0	-	+FL140	-	-	RNAV 1
40	TF	II153	-	076(081.1)	+5.5	6.6	-	-	-	-	RNAV 1
50	TF	II152	-	101(106.2)	+5.5	15.0	R	+FL140	-	-	RNAV 1
60	TF	II504	-	101(106.4)	+5.5	11.1	-	+10000	-250	-2.6	RNAV 1
70	TF	II505	-	012(017.1)	+5.5	7.0	L	+9100	-	-1.2	RNAV 1
80	TF	NEGEZ	-	012(017.1)	+5.5	10.7	-	+5100	-230	-3.5	RNAV 1

WAYPOINT LIST

WPT	COORD		WPT	COORD	
ARSUL	422600.00N	0685000.00E	II418	421507.23N	0695934.48E
EDIBA	424519.00N	0682349.00E	II419	421632.68N	0695307.16E
EKTUN	422343.15N	0694857.00E	II500	420629.49N	0684922.30E
II110	423105.57N	0691449.44E	II501	420725.27N	0685720.18E
II130	423828.40N	0684848.42E	II504	420103.81N	0693940.03E
II152	420412.16N	0692526.61E	II505	420744.57N	0694225.35E
II153	420825.64N	0690603.02E	II520	421633.11N	0692343.82E
II165	424638.38N	0685637.20E	LARBA	424922.00N	0683725.00E
II411	423349.77N	0690531.03E	MAGOL	425338.00N	0685144.00E
II413	422756.58N	0692930.83E	MIKNO	420200.00N	0681200.00E
II414	422535.40N	0694022.65E	NEGEZ	421757.76N	0694639.56E
II416	422217.94N	0695525.14E	TIROP	421942.20N	0691233.80E
II417	422052.37N	0700152.99E	TONLA	421334.00N	0681508.00E